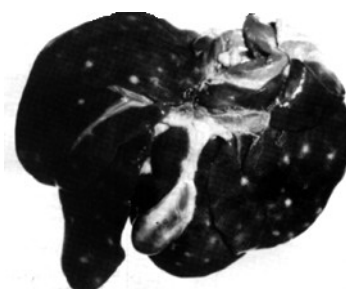
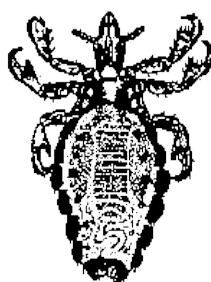
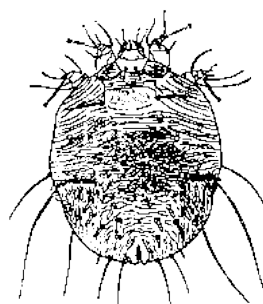


MANGE, LICE AND WORM CONTROL PROGRAMME

This is not an eradication programme

Animal group	Treatment programme
Weaned pigs	Treating pigs weaned 10 days (approx 30-35 days old) for 7 days with Ivomec Premix™ at 0.4 kg per tonne , has proved every effective on a number of units.
Growing pigs	Groups of pigs should be treated for 7 days on entry into cleaned rooms with Ivomec Premix™ at 0.4 kg per tonne . If all-in/all-out is not possible treat all pigs in the growing area every 4 months for 7 days, in feed with Ivomec Premix™ at 0.4 kg / tonne
	Spray building with Tactic™ at a dilution of 40 ml to 10 litres of water using a knapsack sprayer
Lactating sows	Feed 2.7 kg of dry sow ration containing 1.25 kg Ivomec Premix™ per tonne and then top up with lactating sow diet after the medicated feed has been eaten
	Or: inject sows with Panomec™ at 1 ml per 33 kg on entry into the farrowing accommodation
Breeding and dry sows	Feed 2.7 kg of dry sow ration containing 1.25 kg Ivomec Premix™ per tonne for 7 days every six months. During treatment period ignore condition scores
Boars	Ensure these are included in the dry sow treatment programme. Ensure boars are fed according to their weight. For example a 200 kg boar feed 2.7 kg per day for 7 days; a 250 kg boar feed 3.3 kg per day for 7 days and for a 300 kg boar feed 4 kg per day for the 7 days of ration containing 1.25 kg Ivomec Premix™ per tonne
Gilts	Include gilts in the 7 day dry sow programme
New arrivals	Inject with Panomec™ at 1 ml per 33 kg 7 to 10 days before mixing or service
Slaughter	Ensure all withdrawal times are adhered too
Feed lines	Ensure that the feed lines are free of medicated feed before animals are sold for slaughter



The mange mite
Sarcoptes scabie

The pig louse
Haematopinus suis

White spot liver
Ascaris suum